

elite 707225



“Comprehensive meter with RS485 (MODBUS) communications allowing remote interrogation of Energy and instantaneous parameters”

The elite 707225 offers:

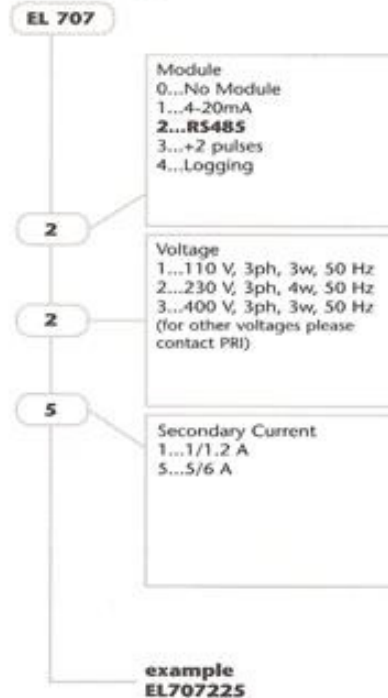
- CALMU™ technology for reliable and consistent accuracy to IEC 61036 and BS EN 61036, CI 1.05
- Maximum and Rising Demand
- Apparent and Reactive Power and Energy
- RS485 (MODBUS) for network applications
- “Favourites” page allows customisation of the meter display sequence
- Diagnostic reporting of connection faults



707225 Functions

Function	EL 707225
Voltage ph-to-ph & ph-to-n	•
Current line and neutral	•
Power kW, kVA, kvar	•
Energy kWh, kVAh, kvarh	•
Power Factor Ave. & ph	•
Frequency	•
Max. Demand kW & kVA	•
Rising Demand kW & kVA	•
Time & Date (MD & Rates)	•
Max. & Min. Volts	•
Max. Amps, kW	•
Min. P.F. & Freq.	•
Export kWh & kvarh	•
Rate/Billing Registers (8 each)	•
Favourites Page	•
Diagnostics	•
Meter set-up details	•
kWh & kVAh pulse outputs	•
Analogue (4 off 4-20mA)	•
RS485 MODBUS	•
Logging (3 off pulse inputs)	•
Extra pulse outputs (2 off)	•

Ordering



elite technical specification

Elite Technical Specification

ELECTRICAL	110 V	230 V	400 V
	3 Phase 3 Wire	3 Phase 4 Wire	3 Phase 3 Wire

METROLOGICAL	IEC61036:1996, CI 1.05 BSEN61036:1997, CI 1.05
--------------	---

CURRENT	ALL MODEL TYPES
Basic	5 A or 1 A (Factory Set)
Maximum	120% I basic
Starting (typical)	0.4% I basic

DISPLAY	Backlit Combination LCD
---------	-------------------------

MECHANICAL	ALL MODEL TYPES
Dimensions (mm)	W.96 x H.96 x D.96
Enclosure Material	Extruded Aluminium
Flame Retardation	UL 94 V0
Protection	IP53 (on front panel)
Weight	0.65 kg (max)
Max. conductor size	2.5 mm ²

VOLTAGES (typical)	110 V	230 V	400 V
Minimum (AC)	77 V	161 V	280 V
Maximum (AC)	143 V	299 V	520 V

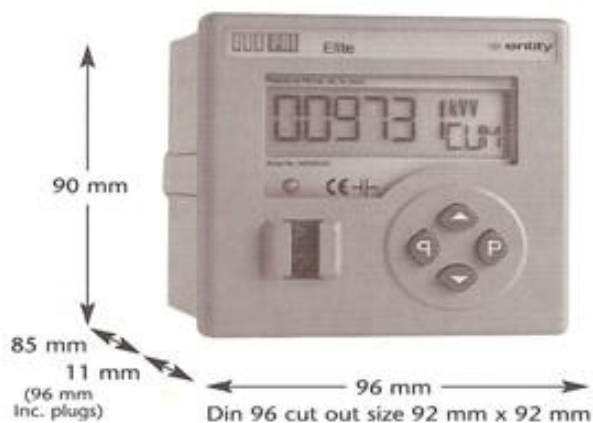
FREQUENCY	50 Hz/60 Hz
-----------	-------------

BURDENS (typical)	ALL MODEL TYPES
Voltage circuit (total)	Less than 2 VA
5 A current circuit	Less than 1.2 VA
1 A current circuit	Less than 0.2 VA

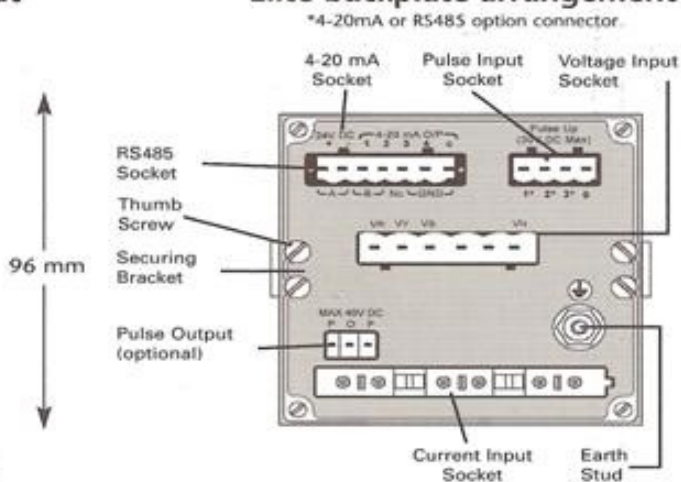
DATA RETENTION	10 years without power
----------------	------------------------

PULSED OUTPUTS	Solid state (norm. open)
Type	40V DC
Voltage Rating	100mA DC max
Current Rating	80 ms, 240 ms
Duration	x0.1, x1, x10, x100
Value	

General arrangement and layout



Elite backplate arrangement



Typical Connection Diagrams

