

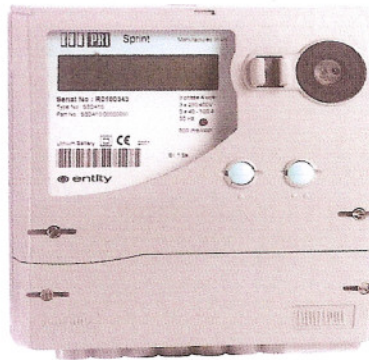
helping to measure, manage & control your energy

Alan Ward
 Utility Metering Solutions Ltd
 PO Box 9129
 Nottingham
 NG2 9EH

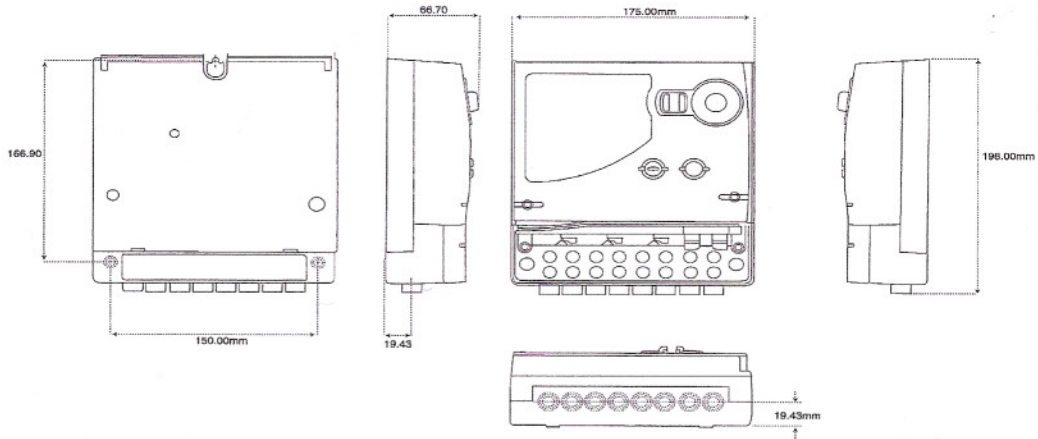
sprint

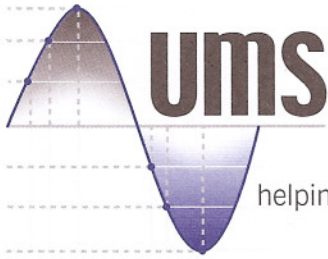
The Sprint offers:

- Full four quadrant metering
- 5 main energy registers
- 8 time of use energy registers, user configurable for all 5 energy types
- 4 maximum demand registers, user configurable for all 5 energy types
- Maximum demand integration periods of 5, 15, 30 and 60 minutes
- 1 output and 1 input (Build option)
- 1200 baud IEC1107 compatible communication port
- 9600 baud sealable PACT communication port
- Type approved to IEC1036
- Ofgem approved



Dimensions





helping to measure, manage & control your energy

Alan Ward
Utility Metering Solutions Ltd
PO Box 9129
Nottingham
NG2 9EH

sprint technical specification

Sprint Technical Specification

ELECTRICAL	230V/240V Ø-N 3 phase 4 wire	ACTIVITY INDICATOR	High intensity red LED Meter Constant 800 impulses per kWh
CURRENT	5 20 20 40 40 65 80 100 100 160 Additional configurations available on request.	ENVIRONMENTAL*	Operating Temperature -10°C to +45°C Storage Temperature -25°C to +70°C Operating Humidity Up to 95% non-condensing * requirements for specific countries, on request
METROLOGICAL	IEC 1036 CI 1.0s or 2.0s IEC 1268 CI 2.0s	BURDEN	Current circuit <2.5VA Voltage circuit <2W/10VA
DISPLAY	LCD 75 x 17mm	TERMINALS	Two screws per cable Suitable for 35mm ² cables (100A) and 50mm ² (optional)
MECHANICAL	Dimensions W.175 X H.250 X D.66.7 mm Enclosure Material ABS/Polycarbonate Degree of Protection IP51 Flame Retardation UL 94 V0 Weight (approx.) 1.15 kg	PULSED OUTPUT (Build option)	Voltage rating 230V AC max @ a typical resistance of 39 Ohms (43 Ohms max) Cable entry 2.5mm ²
FREQUENCY	45-65Hz	PULSED INPUT (Build option)	Voltage rating 230V AC, 24-240V DC max Cable entry 2.5mm ²
DATA RETENTION	10 years minimum		
COMMUNICATIONS			
Local Interrogation Port	IEC1107 compatible port		
Remote Interrogation	PACT Data transfer rates of up to 9600 baud on the PACT port and 1200 baud on the IEC1107 port		
Protocol	PACT PACTLAN		

Wiring Diagram

